

iWay provides comprehensive access to over 300 Enterprise Information Systems that can be accessed from BizTalk Servers without the need to code complex system interfaces.

Product Highlights

- **Enables service-oriented and event-driven architectures** via bidirectional access to data and applications that reside on over 35 platforms
- **Uses open standards such as WSDL and SOAP to create reusable interfaces** from information assets for use with BizTalk Server messages, orchestrations, and transformations
- **Supports synchronous and asynchronous communication** via HTTP, HTTPS, TCP, MSMQ, and other message-oriented middleware
- **Maximizes ROI and reduces TCO** by creating interfaces that can be reused by .NET assemblies, J2EE applications, and any SOAP client
- **Leverages investments in other enterprise message-oriented middleware products** such as WebSphere MQ, Sonic MQ, Oracle AQ, and many more

Microsoft BizTalk

iWay Universal Adapter Offering for Microsoft BizTalk Server

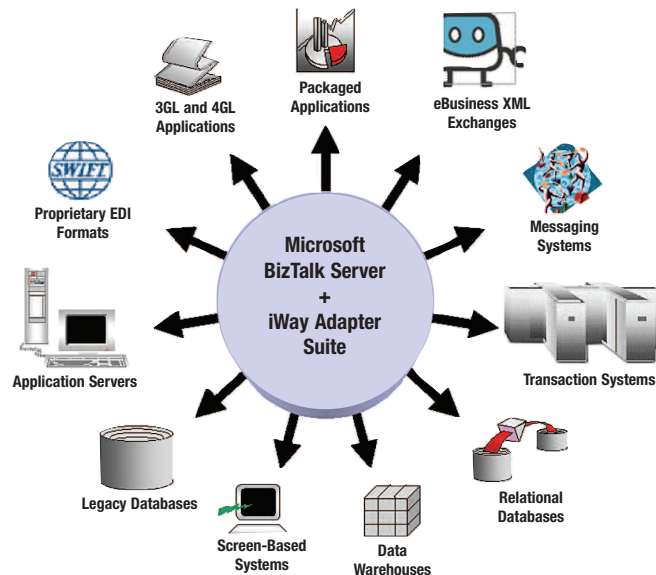
Accelerating Time to Value and ROI With Microsoft BizTalk Server

iWay adapters encapsulate interfaces to more than 300 packaged applications, relational/nonrelational databases, transaction processing systems, and other critical technologies as SOAP-based Web services. By using these adapters with Microsoft BizTalk Server your developers, business analysts, and architects are empowered to incorporate your enterprise information assets into your BizTalk Server transformations, orchestrations, and messaging – with no need for writing code. This frees your developers from developing and maintaining low-level infrastructure code to focus on creating applications that are aligned with your business strategy.

iWay Adapters + BizTalk Server 2004 – an Enterprise-Level Integration Platform

Microsoft BizTalk Server allows you to reduce the complexity of your business applications by abstracting your software components into business process orchestrations. iWay's tools and adapters enable true business agility by enabling BizTalk Server to seamlessly work with virtually any information asset.

iWay adapters complement Microsoft technology by invoking functionality from your Enterprise Information Systems as part of your BizTalk Server



iWay Intelligent Adapters for Microsoft BizTalk Server are available for the following packaged applications, databases, industry standards, and technologies:

Application System Adapters

- Ariba
- AXIS
- Baan
- BroadVision
- Clarify
- Commerce One
- Hogan Financials
- i2 Technologies
- J.D. Edwards
- Lawson Financials
- Manugistics
- Oracle Applications
- PeopleSoft
- SAP Applications
- Siebel
- Vantive
- Walker Interactive

Transaction Processing

- CICS (adapter not on mainframe)
- CICS (adapter on mainframe)
- IBM OTMA
- IMS/TM (adapter not on mainframe)
- IMS/TM (adapter on mainframe)
- Software AG Natural
- Tuxedo

Technology Adapters

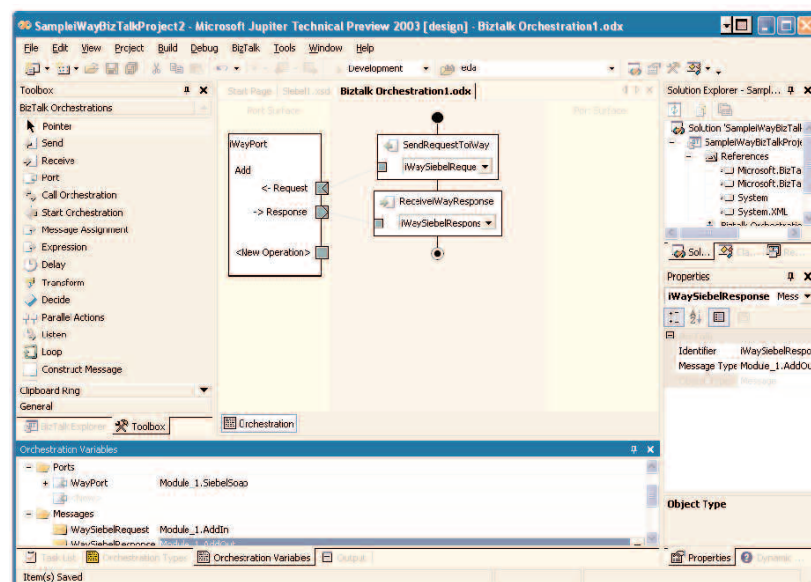
- FTP
- HTTP/HTTPS
- Any J2EE Application Server
- BEA WebLogic Platform
- cc:mail (VIM)
- COBOL
- EJB
- FOCUS
- Fujitsu Interstage
- IBM WebSphere Application Server
- IBM WebSphere MQ
- Internet Mail (SMTP/MIME)
- JacORB
- JMS
- Microsoft BizTalk Server
- Oracle 9iAS
- Oracle AQ
- Orbix
- SMTP
- POP
- SonicMQ
- SunONE Application Server
- TIBCO Rendezvous
- Visibroker

platform. This includes SQL requests to relational and nonrelational databases as well as calls to applications like SAP or Siebel. iWay adapters also work with non-Microsoft enterprise messaging technologies like Sonic MQ, WebSphere MQ, and Oracle AQ and has a native JMS interface. If your enterprise already uses technology such as WebSphere MQ (MQ Series), you can use iWay adapters to listen on these queues and subscribe to topics that can trigger BizTalk Server business process orchestrations or publish to topics, triggering events in other areas of your enterprise. The breadth and depth of iWay's products complement your BizTalk Server investment and make it a true enterprise-class platform.

Seamless Web Services-Based Integration Within Microsoft's Development Environment

All of iWay's design-time tools are tightly integrated into Microsoft's Visual Studio .NET development environment. This equates to quicker development times and reduced tools and skill sets for your IT department to manage. Using iWay adapters to integrate your IT assets is a simple process:

- Use the iWay Application Explorer to generate application metadata from your Enterprise Information System (WSDL or XML schemas). The Application Explorer, a design-time tool that runs inside your BizTalk Server development environment, introspects your applications and data sources.
- Create a Web service from the generated metadata in two mouse-clicks!
- Harvest metadata from the generated Web service WSDL into BizTalk Server for incorporation into mapping, messaging, and orchestration.
- Connect your orchestrations to the iWay port in BizTalk Server.



iWay Adapters working inside of Microsoft BizTalk

Support for 300 Information Systems

iWay's Universal Adapter Suite for BizTalk Server provides you with access to iWay's collection of over 300 intelligent adapters, allowing you to integrate your BizTalk Server orchestrations with your Enterprise Information Systems. iWay provides intelligent adapters for:

- Application packages such as Siebel, SAP, PeopleSoft, Ariba, Baan, J.D. Edwards, Lawson, Clarify, and many more
- e-Business formats such as SWIFT, FIX, HIPAA, ACORD, ebXML, OAG BOD's, and XBRL
- Legacy database systems such as Adabas, Ingres, VSAM, MUMPS, Teradata, IMS, and many others
- Relational databases such as Oracle, MS SQL Server, Informix, Sybase, and many more
- Transaction environments such as CICS, IMS/TM and Tuxedo
- 35 mainframe, midrange, UNIX, and PC operating platforms
- Custom 3GL and 4GL applications
- Enterprise Java™ Beans (EJB)
- CORBA Components
- Messaging products like Sonic MQ, Oracle AQ, WebSphere MQ, and JMS™
- Terminal emulation adapters that provide wrappers around the presentation tiers of applications of "green-screen" 3270 and 5250 systems

Accelerating Integration Initiatives

iWay is the world's leading provider of software for connecting application frameworks to legacy mainframe databases, composite packaged applications, transaction processing systems, relational database systems, and other business systems. All iWay adapters are accessible, without the need to write and maintain code, within the same Universal Adapter Suite, accelerating your integration project timelines and lowering your TCO.

Technical Specifications

Adapter Version

- iWay Intelligent Adapter for BizTalk

Software Versions Supported

- Microsoft BizTalk Server 2000, 2002, and 2004

Data Adapters

- Adabas
- Adabas/C
- ALLBASE/SQL
- C-ISAM (Informix)
- C-ISAM (Microfocus)
- CA-IDMS/DB
- CA-IDMS/SQL
- Datacom
- DB2
- DB2/400
- DBMS
- ENSCRIBE
- Essbase
- Excel
- FOCUS Data Access
- IDS-II
- ImageSQL
- IMS
- NFOMan
- Informix
- Ingres
- Interplex
- Lotus Notes
- Microsoft Access
- Microsoft OLAP Services
- Microsoft SQL Server
- Millennium
- Model 204
- MUMPS (DSM)
- NOMAD
- NonStop SQL
- Nucleus
- Omnidex
- OpenIngres
- Oracle
- PROGRESS
- QSAM
- Rdb
- Red Brick
- RMS
- SAP BW
- SQL/DS
- SUPRA
- Sybase
- Sybase/IQ
- System 2000
- Teradata
- TOTAL
- TurboIMAGE
- Unisys DMS 1100/2200
- UniVerse
- VSAM
- XML

e-Business Adapters

- AS1
- AS2
- Comma-Delimited Files
- cXML
- ebXML
- EDI-ANSI X12
- EDI-EDIFACT

- FIX
- FIXML
- Flat (positional) Files
- HIPAA
- HL7
- ISO 15022
- RosettaNet
- OAG BOD
- SAIC-CMS
- Structured Files
- SWIFT
- SWIFTML
- UCCNet
- XBRL
- xCBL
- XML

Touchpoint Adapters

- Analysis Codes
- Bill of Material
- Catalogs
- Change Quantity
- Chart of Accounts
- Component Issues
- Container Move
- Customer
- Inventory
- Item
- Item Maintenance
- Locations
- Order Changes
- Preliminary Invoices
- Production Order
- Purchase Order
- Receipts
- Requisition
- Returns
- Sales Order
- Suppliers
- Users
- Work Order
- Work Order Status

Emulation Adapters

- 3270 (Mainframe, zSeries)
- 5250 (AS/400, iSeries)

Connector Technologies

- .NET
- ActiveX
- JCA™
- JDBC™
- Microsoft DTS
- MQSeries
- ODBC
- OLE DB
- SOAP

Runtime Platforms Supported

- HP MPE/XL
- HP-UX
- Linux, Caldera
- Linux, Red Hat
- MVS, OS/390, z/OS
- NCR MP-RAS
- OpenVMS Alpha
- OpenVMS VAX
- OS/2 EE
- OS/390 Open Edition
- OS/400
- RS6000 AIX
- Sequent Dynix
- Siemens Reliant
- SUN Solaris
- Tandem
- Tru64 UNIX
- Unisys
- VM ESA
- Windows

Find Out More

To find out more about how iWay Software can integrate all of your information systems to support e-business initiatives, visit www.iwaysoftware.com, e-mail info@iwaysoftware.com, or, in the U.S. and Canada, call toll-free (866) 297-4929.



Corporate Headquarters Two Penn Plaza, New York, NY 10121-2898 (866) 297-4929
www.iwaysoftware.com info@iwaysoftware.com

For International Inquiries +1(212) 330-1700

Copyright © 2004 by iWay Software. All rights reserved. Patent pending. [27] All products and product names mentioned in this publication are trademarks or registered trademarks of their respective companies.



Printed in the U.S.A.
 on recycled paper

DN3600554.0206