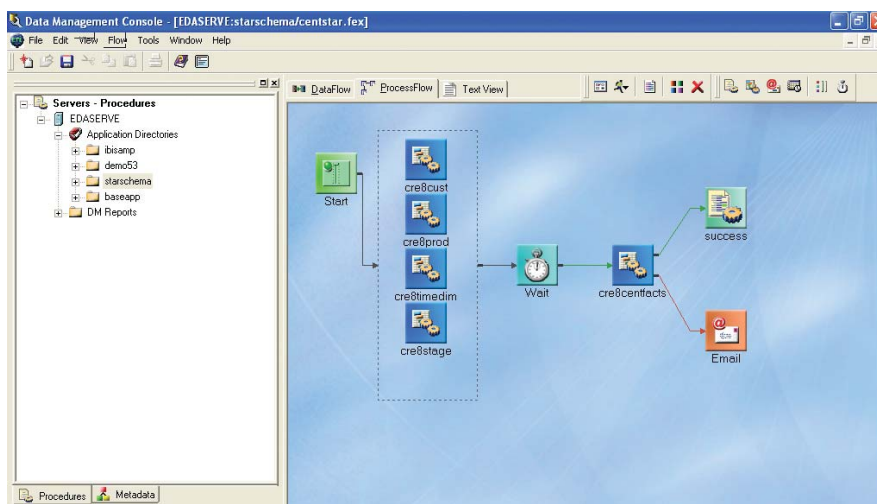


iWay Software's suite assembles powerful, pre-built components for enterprise-class integration scenarios – without custom code – delivering the fastest, most cost-effective, and simplest way to integrate business processes and achieve the promise of SOA: true reusability.

- **Full-featured ETL capabilities** at a fraction of the competition's price
- **Unmatched legacy integration capabilities**, plus access to over 250 information systems
- **Easy-to-use data adapters** that can be reused in real time by other tools, applications, and Web services
- **Rapid installation and configuration**, even in complex environments
- **Runs natively on Windows, UNIX, iSeries (AS/400), and mainframes**
- **Comprehensive, multiplatform auditing** of ETL flows and adapter usage
- **Preemptive governing** prevents runaway queries

Data Integration Solutions



Rapidly Build a Powerful and Flexible Data Architecture

iWay Software offers the broadest range of data management options available today – empowering you to provide direct access to data in operational systems, stage data in warehouses or marts, and allow dynamic drill-through to detail data – so you can design your architecture to address the unique information needs of all your users. From a comprehensive adapter suite and powerful ETL tools, to intelligent resource analysis and governing solutions, iWay Software provides everything you need to develop an effective, yet economical strategy for accessing, storing, managing, and delivering all your enterprise information assets.

Install, Access, Manage

iWay adapters provide the fastest way to make all data sources available as part of a service-oriented architecture. They enable SQL-based tools to interact with over 250 information systems, without any custom integration code. iWay adapters can provide statistics on their usage and performance characteristics, and when used in ETL processes a full audit trail can be achieved from source to target.

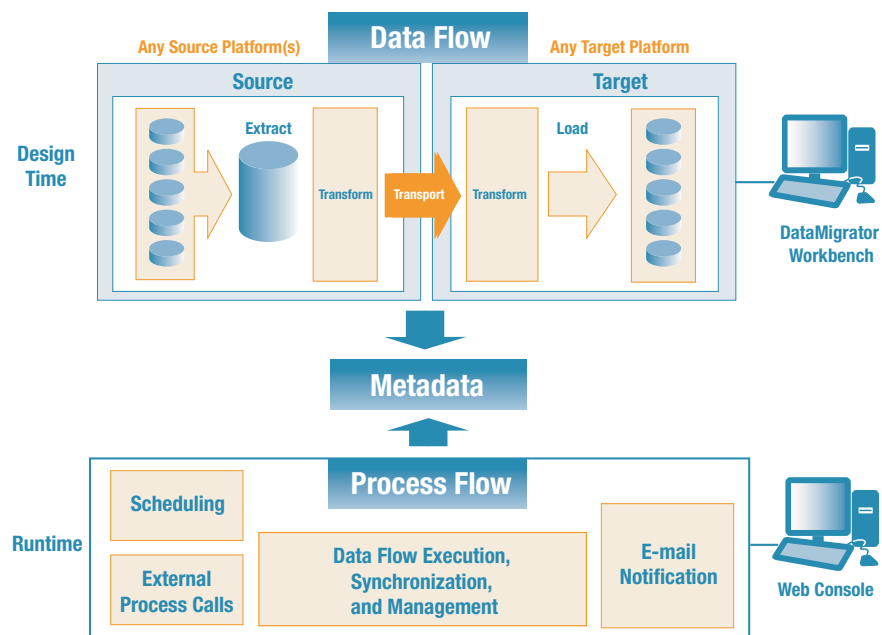
The result is easier data warehousing, ETL process development, EAI, BPM, business intelligence, and application development. Some of the uses of iWay adapters include:

- ETL using DataMigrator, iWay's ETL tool
- Enterprise reporting and analysis using WebFOCUS, Information Builders' business intelligence tool
- .NET application development
- Java application development using J2EE application servers
- EAI using integration brokers and ESBs
- Custom applications using Microsoft Office

Robust Extract, Transform, and Load (ETL) Technology

iWay DataMigrator is a powerful and comprehensive set of fully automated tools designed to dramatically simplify the creation, maintenance, and expansion of reporting structures such as data warehouses, as well as other data integration tasks such as application loading. With its intuitive, easy-to-use interface, DataMigrator enables fast, flexible end-to-end ETL process creation involving heterogeneous data structures across disparate computing platforms, and allows users to efficiently:

- Aggregate, join, merge, and apply selection criteria to information from any combination of back-office systems
- Simplify data movement from back-office systems to e-business platforms, using automatically generated and managed FTP scripts or most native transport protocols



iWay DataMigrator enables fast, flexible end-to-end ETL process creation and monitoring.

- **Data Flow Designer.** The intuitive flow-control interface allows for visual creation of joins, rapid table and column searches, and dynamic error notification. Additionally, real-time flow testing can be easily and quickly conducted with just a click of the mouse. Users can also add COBOL routines, or routines under a C wrapper to the DataMigrator function list, and load multiple targets on a single pass of an extract.
- **Web Console.** Remote review and administration provides efficient management of data and process flows in a secure environment. Administrators and users can easily review flow statistics and drill down into flow logs, review the flow queue, start and stop servers and server processes, schedule flow and configure e-mail nodes, manage adapters and metadata, administrate application directories, and create and edit scripts and user exits.

Step-by-Step ETL Operation

Data flows of simple, yet powerful steps fully automate the process of accessing and migrating data:

- **Extraction.** Users can efficiently select sources for extraction, join the data, and select columns for extraction. The transformation calculator can also be used for extract transformations or virtual transformations performed on the source platform.
- **Transformation.** DataMigrator is unique in its ability to define virtually any transformation and perform it as efficiently as possible, without custom extraction routines. It can easily perform transformations outside the limits of SQL – even using proprietary extensions typical of most modern relational databases – and can incorporate routines containing IF-THEN-ELSE logic. It also allows for advanced transformation functions such as the ability to create 3GL subroutines, add them to a library of subroutines for reuse, and add comments to document their business use.
- **Loading.** Users can easily choose a target table or create one dynamically and efficiently map source columns to target columns. DataMigrator simplifies data maintenance tasks and provides maximum flexibility for handling exceptions like duplicate inserts. As a result, users have the ability to reject records and update or delete records with the same keys for complete control over the entire load process.

Process Management

- **Process flow assembly.** As data flows are built, they can be assembled into a larger ETL process flow. These process flows can be scheduled, selectively called using conditional process flow logic, and even integrated with stored procedures and remote procedure calls. In addition, different data flows can be assigned to run in parallel, which maximizes throughput and resource utilization. Finally, integration with e-mail systems allows DataMigrator to let administrators know when something has gone wrong with their ETL processes. Most importantly, all of these options can be overridden or extended using standard techniques; process flows, for example, can be initiated by JCL on the mainframe instead of using the DataMigrator scheduler.

DataManager also provides full auditability of the ETL process. Each process and data flow generates a complete record of results, including a log of significant events that occurred during its run. For example, you can choose to view – in a message window at the bottom of your screen – either

summarized messages such as whether the data flow has been submitted and was successful, or detailed messages for purposes such as debugging SQL statements. Flow summaries and detailed logging are available from the Web Console.

Metadata

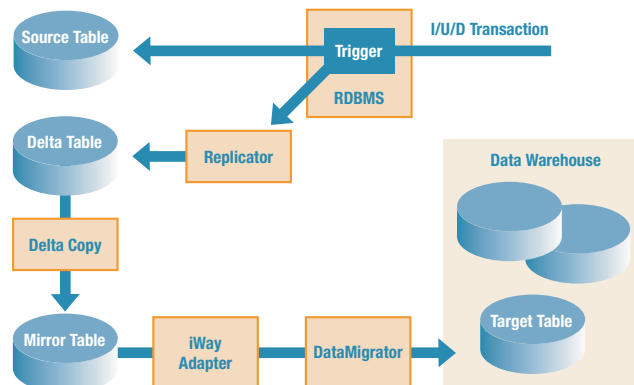
Finally, iWay DataMigrator provides a set of metadata and auditing reports that provide all the most commonly requested metadata about DataMigrator jobs. In addition to the core technical metadata provided by our adapters, iWay DataMigrator provides:

- Impact analysis on the tables and columns used in ETL processes
- Data flows that use a given source
- Sources that exist within a given data flow
- Source and target metadata
- Result of FTP sessions and bulk loads controlled by DataMigrator

Since iWay DataMigrator uses iWay adapters for connectivity, it is the only ETL tool on the market that can have a unified view of metadata for every data source in the enterprise, including legacy systems like IMS, packaged applications like SAP, relational databases, and more.

Change Data Capture for Active Data Warehouses

Through our partnership with Lakeview Technologies, DataMigrator can be integrated with powerful change data capture (CDC) capabilities. CDC transfers only changed records (inserted, updated, or deleted), increasing labor efficiency by requiring only a single data flow to be composed to handle both initial load and delta processing, dramatically reducing processing time and CPU cycles, and improving the timeliness of information in the data warehouse. Changed records can be pulled as frequently as every 5 minutes, so you can enable near-real-time or “active” data warehouses.



Enterprise-Wide Resource Performance and Usage Analysis

Knowledge really is power. When you know how your enterprise information is being used, you have the power to optimize it, secure it, and modify it to achieve consistent, outstanding performance. iWay Software's Resource Analyzer provides over 80 detailed reports and graphs to help you discover how your e-business applications use your information, including:

- Usage characteristics such as heaviest usage times, most requested content and aggregations, and applications using the most resources
- Performance characteristics such as average or maximum CPU consumption per request, average or maximum response time, number of records returned, and maximum cumulative CPU or response time per request

Resource Analyzer can help your e-business applications operate at peak efficiency for maximum return on investment. By identifying specific bottlenecks and inefficiencies in your environment, you can eliminate resource contention and:

- **Long-running requests.** These requests use excessive resources – a particular problem when dealing with operational systems – and result in long waits for consumers. Target these requests for optimization first.
- **Dormant data.** Unused data in e-commerce databases can make response times slower and batch updates more cumbersome. Eliminate it.
- **Excessive joins.** Joining too many tables is expensive and slow. Stage data from many tables into one for better performance and navigability.
- **Repeated aggregations.** Aggregations can cause a bottleneck during query execution. Improve performance by pre-calculating the aggregations and staging them in summary tables.
- **Poor selection criteria.** Indexes increase selection speeds but impede update and insertion performance. Identify those fields that really need to be indexed and eliminate those that don't.
- **Times of heaviest workload.** All e-business systems experience peaks and valleys of demand. Manage peak loads and justify infrastructure expenditures by identifying your heaviest resource consumption times by hour, day, week, or month.
- **Query volumes.** Un-tuned queries frequently return more data than necessary. Identify these queries so you can target them for optimization.

Preemptive Query Governing

iWay Resource Governor eliminates complex, long-running, or superfluous queries before they reach the database. Resource Governor rapidly and preemptively identifies problem queries by gathering a set of sophisticated metrics about each query. These metrics are created for every type of data source, regardless of underlying database or file type.

Find Out More

To see how we can help you succeed, visit us at iwaysoftware.com, e-mail us at info@iWaySoftware.com, or in the U.S. and Canada, call toll-free **(866) 297-4929**.

Based on usage and performance criteria and business rules that you define, the Resource Governor will cancel the query, issue a warning message, or let the query pass. Query cancellation is preemptive – it occurs before any resources are used to get data from any back-office system. And Resource Governor's intelligence engine allows it to know whether or not a query will break your business rules, even if it has not seen that exact query before.

Using our graphical wizards or unique Business Rules Language (BRL), you can define what a problem query is and solve problems such as:

- Long-running queries that interfere with operational systems
- Queries that do not use correct indexes
- Queries that use improper aggregation levels
- Queries without conditional predicates
- Queries originating from an unauthorized source

About iWay Software

iWay Software's suite of graphical design tools assemble powerful, pre-built components for enterprise-class integration scenarios – without custom code. These integration configurations can be deployed in a standalone manner in any JVM-supported environment or with any Web Application Server. This is the fastest, most cost-effective, and simplest way to integrate business processes and achieve the promise of SOA: true reusability.

Worldwide Offices

North America

United States

- **Atlanta,*** GA (770) 395-9913
- **Baltimore,** MD Professional Services: (703) 247-5565
- **Boston,*** MA (781) 224-7660
- **Channels,** (800) 969-4636
- **Charlotte,** NC Professional Services: (704) 494-2680
- **Chicago,*** IL (630) 971-6700
- **Cincinnati,*** OH (513) 891-2338
- **Dallas,*** TX (972) 490-1300
- **Denver,*** CO (303) 770-4440
- **Detroit,*** MI (248) 641-8820
- **Federal Systems,*** DC (703) 276-9006
- **Hartford,** CT (860) 249-7229
- **Houston,*** TX (713) 952-4800
- **Los Angeles,*** CA (310) 615-0735
- **Minneapolis,*** MN (651) 602-9100
- **New Jersey*** Sales: (973) 593-0022
- **New York,*** NY Sales: (212) 736-7928
Professional Services: (212) 736-4433, ext. 4443
- **Orlando,*** FL (407) 804-8000
- **Philadelphia,*** PA Sales: (610) 940-0790
- **Phoenix,** AZ (480) 346-1095
- **Pittsburgh,** PA Sales: (412) 494-9699
- **St. Louis,*** MO (636) 519-1411
- **San Jose,*** CA (408) 453-7600
- **Seattle,** WA (206) 624-9055
- **Washington,*** DC Sales: (703) 276-9006
Professional Services: (703) 247-5565

Canada

Information Builders (Canada) Inc.

- **Calgary** (403) 538-5415
- **Ottawa** (613) 233-0865
- **Montreal*** (514) 421-1555
- **Toronto*** (416) 364-2760
- **Vancouver** (604) 688-2499

Mexico

Information Builders Mexico

- **Mexico City** 52-55-5062-0660

Australia

Information Builders Pty. Ltd.

- **Melbourne*** 61-3-9631-7900
- **Sydney*** 61-2-8223-0600

Europe

- **Belgium*** Information Builders Belgium
Brussels 32-2-7430240
- **France*** Information Builders France S.A.
Paris 33-14-507-6600
- **Germany** Information Builders (Deutschland)
Eschborn* 49-6196-77576-0
- **Netherlands*** Information Builders
(Netherlands) B.V.
Amsterdam 31-20-4563333
- **Portugal** Information Builders Portugal
Lisbon 351-217-217-400
- **Spain** Information Builders Iberica S.A.
Barcelona 34-93-344-32-70
Bilbao 34-94-452-50-15
Madrid* 34-91-710-22-75
- **Switzerland** Information Builders Switzerland AG
Dietlikon 41-44-839-49-49
- **United Kingdom*** Information Builders (UK) Ltd.
London 44-845-658-8484

Representatives

- **Austria** Raiffeisen Informatik Consulting GmbH
Vienna 43-12-1136-3870
- **Brazil** InfoBuild Brazil Ltda.
São Paulo 55-11-3285-1050
- **China**
InfoBuild China, Inc.
Shanghai 86-21-5080-5432
Rongji Software Technology Co., Ltd.
Beijing 86-10-5873-2031
- **Denmark** InfoBuild AB
Kista 46-735-24-34-97
- **Egypt** Al-Hisn Al-Waqi (AHAW)
Riyadh 996-1-4412664
- **Ethiopia** MKTY IT Services Plc
Addis Ababa 251-11-5501933
- **Finland** InfoBuild Oy
Vantaa 358-207-580-840
- **Greece** Applied Science
Athens 30-210-699-8225
- **Guatemala** IDS de Centroamerica
Guatemala City 502-2361-0506
- **Gulf States** Al-Hisn Al-Waqi (AHAW)
 - Bahrain ■ Kuwait ■ Oman
 - Qatar ■ Yemen ■ United Arab EmiratesRiyadh 996-1-4412664
- **India*** InfoBuild India
Chennai 91-44-42177082
- **Israel** NESS A.T. Ltd.
Tel Aviv 972-3-5483638
- **Italy** NessPRO Italy S.p.A.
Genoa 39-010-64201-224
Milan 39-02-2515181
Turin 39-011-5513-211
- **Japan** K.K. Ashisuto
Osaka 81-6-6373-7113
Tokyo 81-3-5276-5863
- **Jordan** Al-Hisn Al-Waqi (AHAW)
Riyadh 996-1-4412664
- **Malaysia** Elite Software Technology Sdn Bhd
Kuala Lumpur 60-3-21165682
- **Norway** InfoBuild Norway
Oslo 47-23-10-02-80
- **Philippines** Beacon Frontline Solutions, Inc.
Makati City 63-2-750-1972
- **Poland/Central and Eastern Europe** InfoBuild SPJ.
Warsaw 48-22-657-00-14
- **Russian Federation** FOBOS Plus Co., Ltd.
Moscow 7-495-124-0810
- **Saudi Arabia** Al-Hisn Al-Waqi (AHAW)
Riyadh 996-1-4412664
- **Singapore**
Automatic Identification Technology Ltd.
Singapore 65-6286-2922
- **South Africa**
InfoBuild South Africa (Pty.) Ltd.
Gauteng 27-83-4600800
Fujitsu Services (Pty.) Ltd.
Johannesburg 27-11-2335911
- **South Korea**
Unitech Infocom Co. Ltd.
Seoul 82-2-2026-3100
UVANSYS
Seoul 82-2-832-0705
- **Sweden** InfoBuild AB
Kista 46-8-588-370-43
- **Taiwan** Galaxy Software Services
Taipei 886-2-2586-7890
- **Thailand** Datapro Computer Systems Co. Ltd.
Bangkok 662-679-1927, ext. 200
- **Venezuela** InfoServices Consulting
Caracas 58-212-763-1653

Toll-Free Number

- **Sales, ISV, VAR, and SI Partner Information**
(800) 969-4636

* Training facilities are located at these branches.



Corporate Headquarters Two Penn Plaza, New York, NY 10121-2898 (866) 297-4929
iwayssoftware.com info@iwayssoftware.com
For International Inquiries +1(212) 330-1700

DN13600975.0508

Copyright © 2008 by iWay Software. All rights reserved. Patent pending. [77] All products and product names mentioned in this publication are trademarks or registered trademarks of their respective companies.



Printed in the U.S.A.
on recycled paper